

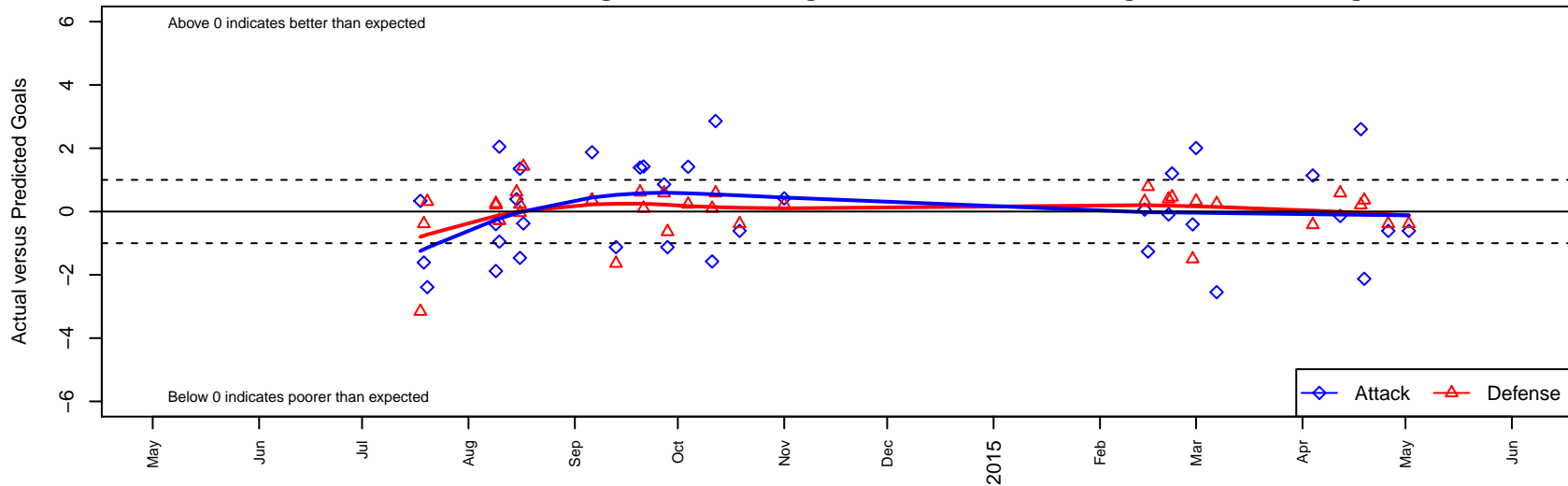
# Crossfire OR WUSC Levante White G01

Crossfire Oregon  
 West Linn, OR  
 G01 total strength=1465  
 attack=10.69 defense=9.42  
 fall league = OPL NPL U13  
 spr league = Spr OPL Chinook Div U14

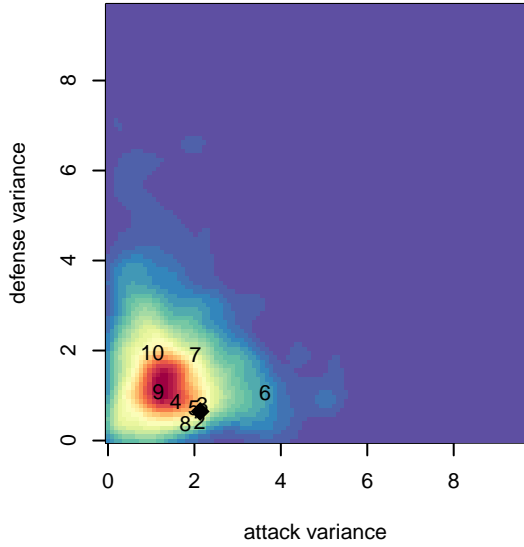
alt names used:

Venues played:  
 2014 Nike Crossfire Challenge Gold U13  
 2014 Chinook Cup Gold U13  
 2014 Mt Hood Challenge U13  
 2014 OPL National Premier League U13  
 2014 Spr OPL Chinook Division U14  
 2014 OPL State Cup U13

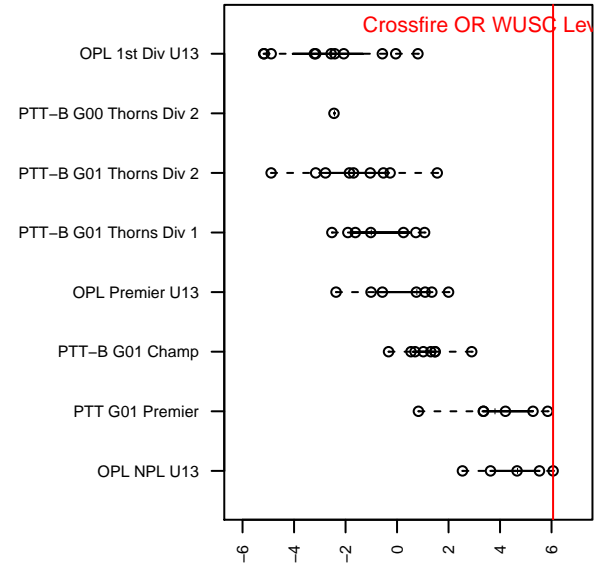
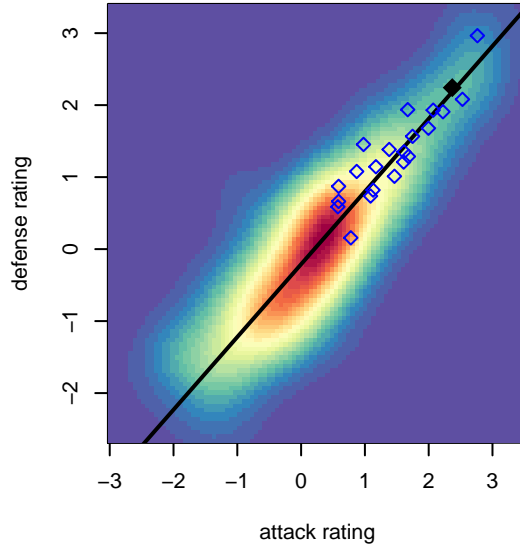
**Crossfire OR WUSC Levante White G01**  
 Dots are actual minus expected GF (blue circles) and GA (red triangles).  
 Blue line is smoothed change in attack strength. Red is smoothed change in defense strength.



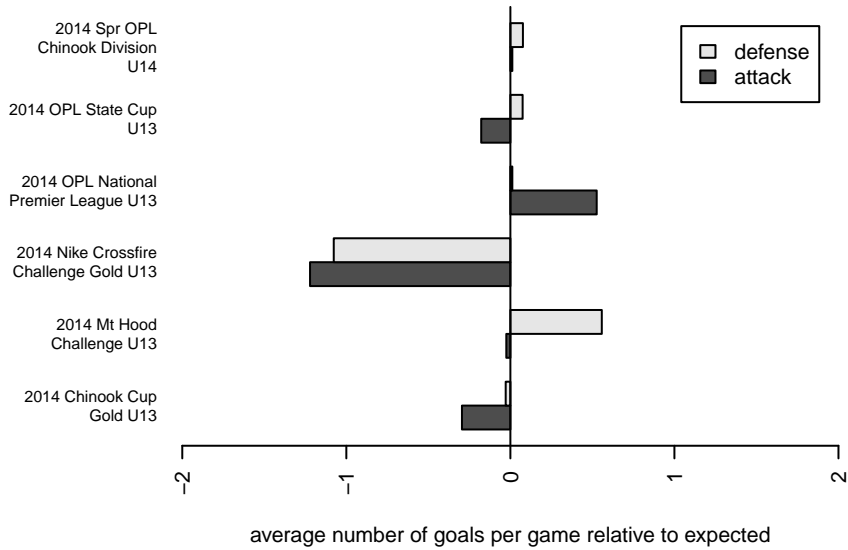
**attack and defense variance (black dot)  
relative to other teams  
and top 10 in region**



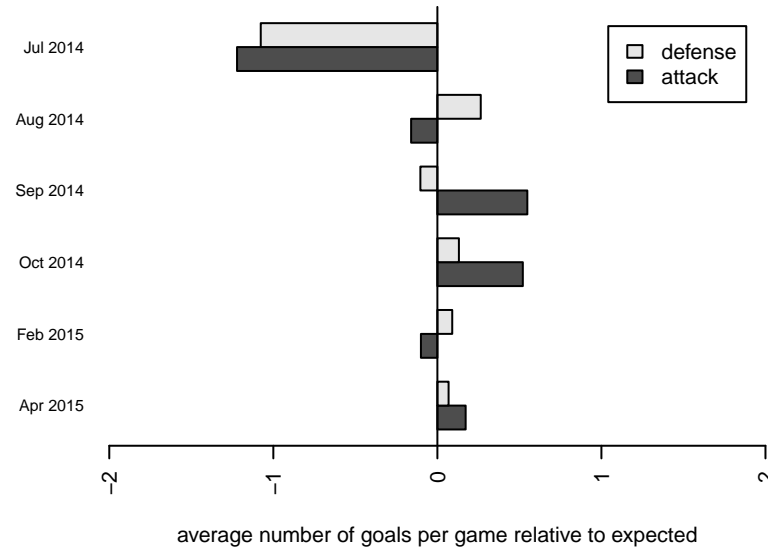
**attack and defense rating  
relative to others at age  
and all opponents in last 13 months**



**Performance relative to 13 month average**



**Performance relative to 13 month average**



| date       | home                                |   | away                                |   | venue                                | pred.home | pred.away |
|------------|-------------------------------------|---|-------------------------------------|---|--------------------------------------|-----------|-----------|
| 2015-05-02 | Crossfire OR WUSC Levante White G01 | 1 | THUSC Element G01                   | 1 | 2014 OPL State Cup U13               | 1.61      | 0.61      |
| 2015-04-26 | Crossfire OR WUSC Levante White G01 | 1 | THUSC Element G01                   | 1 | 2014 OPL State Cup U13               | 1.61      | 0.61      |
| 2015-04-19 | FC Portland Navy G01                | 0 | Crossfire OR WUSC Levante White G01 | 2 | 2014 OPL State Cup U13               | 0.36      | 4.13      |
| 2015-04-18 | Crossfire OR CUSC Power Rays G01    | 0 | Crossfire OR WUSC Levante White G01 | 6 | 2014 OPL State Cup U13               | 0.20      | 3.40      |
| 2015-04-12 | Crossfire OR WUSC Levante White G01 | 3 | Crossfire OR LOSC Storm G01         | 0 | 2014 OPL State Cup U13               | 3.14      | 0.58      |
| 2015-04-04 | FC Portland Navy G00                | 1 | Crossfire OR WUSC Levante White G01 | 4 | 2014 Spr OPL Chinook Division U14    | 0.58      | 2.86      |
| 2015-03-07 | Pacific FC Orange G00               | 0 | Crossfire OR WUSC Levante White G01 | 2 | 2014 Spr OPL Chinook Division U14    | 0.25      | 4.55      |
| 2015-03-01 | THUSC Silver G00                    | 0 | Crossfire OR WUSC Levante White G01 | 6 | 2014 Spr OPL Chinook Division U14    | 0.33      | 3.99      |
| 2015-02-28 | FC Salmon Creek Nemesis Blue G00    | 2 | Crossfire OR WUSC Levante White G01 | 2 | 2014 Spr OPL Chinook Division U14    | 0.50      | 2.41      |
| 2015-02-22 | Crossfire OR WUSC Levante White G01 | 5 | Crossfire OR SSC Freedom G00        | 0 | 2014 Spr OPL Chinook Division U14    | 3.80      | 0.46      |
| 2015-02-21 | Crossfire OR WUSC Levante White G01 | 3 | Crossfire OR WUSC Celtic White G00  | 0 | 2014 Spr OPL Chinook Division U14    | 3.09      | 0.39      |
| 2015-02-15 | Crossfire OR WUSC Levante White G01 | 1 | Crossfire OR LOSC Blue 1 G00        | 0 | 2014 Spr OPL Chinook Division U14    | 2.27      | 0.79      |
| 2015-02-14 | Crossfire OR WUSC Levante White G01 | 5 | Pacific FC Blue G00                 | 0 | 2014 Spr OPL Chinook Division U14    | 4.94      | 0.32      |
| 2014-11-01 | Crossfire OR WUSC Levante White G01 | 6 | Pacific FC Blue G01                 | 0 | 2014 OPL National Premier League U13 | 5.59      | 0.23      |
| 2014-10-19 | THUSC Element G01                   | 1 | Crossfire OR WUSC Levante White G01 | 1 | 2014 OPL National Premier League U13 | 0.61      | 1.61      |
| 2014-10-12 | Crossfire OR WUSC Levante White G01 | 6 | Crossfire OR LOSC Storm G01         | 0 | 2014 OPL National Premier League U13 | 3.14      | 0.58      |
| 2014-10-11 | Crossfire OR WUSC Levante White G01 | 0 | FC Portland pre-ECNL G01            | 1 | 2014 OPL National Premier League U13 | 1.58      | 1.10      |
| 2014-10-04 | Pacific FC Blue G01                 | 0 | Crossfire OR WUSC Levante White G01 | 7 | 2014 OPL National Premier League U13 | 0.23      | 5.59      |
| 2014-09-28 | FC Portland Navy G01                | 1 | Crossfire OR WUSC Levante White G01 | 3 | 2014 OPL National Premier League U13 | 0.36      | 4.13      |
| 2014-09-27 | Crossfire OR LOSC Storm G01         | 0 | Crossfire OR WUSC Levante White G01 | 4 | 2014 OPL National Premier League U13 | 0.58      | 3.14      |
| 2014-09-21 | FC Portland pre-ECNL G01            | 1 | Crossfire OR WUSC Levante White G01 | 3 | 2014 OPL National Premier League U13 | 1.10      | 1.58      |
| 2014-09-20 | Crossfire OR WUSC Levante White G01 | 3 | THUSC Element G01                   | 0 | 2014 OPL National Premier League U13 | 1.61      | 0.61      |
| 2014-09-13 | Crossfire OR WUSC Levante White G01 | 3 | FC Portland Navy G01                | 2 | 2014 OPL National Premier League U13 | 4.13      | 0.36      |
| 2014-09-06 | FC Portland Navy G01                | 0 | Crossfire OR WUSC Levante White G01 | 6 | 2014 OPL National Premier League U13 | 0.36      | 4.13      |
| 2014-08-17 | Crossfire OR WUSC Levante White G01 | 1 | Mustang Blast G01                   | 0 | 2014 Mt Hood Challenge U13           | 1.38      | 1.42      |
| 2014-08-16 | BSC Portland Black-Legends G01      | 0 | Crossfire OR WUSC Levante White G01 | 4 | 2014 Mt Hood Challenge U13           | 0.23      | 5.47      |
| 2014-08-16 | Crossfire OR WUSC Levante White G01 | 3 | ETFC Cypress Black G01              | 1 | 2014 Mt Hood Challenge U13           | 1.65      | 0.96      |
| 2014-08-15 | Crossfire OR WUSC Levante White G01 | 2 | THUSC Element G01                   | 0 | 2014 Mt Hood Challenge U13           | 1.61      | 0.61      |

| <b>date</b> | <b>home</b>                         |   | <b>away</b>                         |   | <b>venue</b>                           | <b>pred.home</b> | <b>pred.away</b> |
|-------------|-------------------------------------|---|-------------------------------------|---|--|------------------|------------------|
| 2014-08-10  | Crossfire OR WUSC Levante White G01 | 5 | Crossfire OR LOSC Blue 1 G01        | 1 | 2014 Chinook Cup Gold U13              | 2.95             | 0.71             |
| 2014-08-10  | Crossfire OR WUSC Levante White G01 | 2 | Crossfire OR LOSC Blue 1 G01        | 1 | 2014 Chinook Cup Gold U13              | 2.95             | 0.71             |
| 2014-08-09  | Crossfire OR WUSC Levante White G01 | 3 | Crossfire OR CUSC Power Rays G01    | 0 | 2014 Chinook Cup Gold U13              | 3.40             | 0.20             |
| 2014-08-09  | PCU SESC Dynamite G01               | 0 | Crossfire OR WUSC Levante White G01 | 6 | 2014 Chinook Cup Gold U13              | 0.25             | 7.88             |
| 2014-07-20  | Crossfire OR WUSC Levante White G01 | 0 | Kitsap Alliance Red G01             | 0 | 2014 Nike Crossfire Challenge Gold U13 | 2.39             | 0.31             |
| 2014-07-19  | THUSC Element G01                   | 1 | Crossfire OR WUSC Levante White G01 | 0 | 2014 Nike Crossfire Challenge Gold U13 | 0.61             | 1.61             |
| 2014-07-18  | Crossfire Premier Schmetzer G01     | 5 | Crossfire OR WUSC Levante White G01 | 1 | 2014 Nike Crossfire Challenge Gold U13 | 1.84             | 0.66             |